

WATER SENSOR WITH RELAY CONTACT



- ◆ Will Detect Any Conductive Non-Flammable Liquid
- ◆ Ideal Anywhere Water Damage Could Occur
- ◆ Automatic Reset ◆ 6 Foot Jacketed Lead Standard
- ◆ Custom Lead Lengths Available
- ◆ Available in 5 VDC, 12 VDC And 24 VDC
- ◆ Closed and Open Loop Versions

Undetected water damage, such as that caused by leaking pipes or corroded water heaters, cost homeowners tens of thousands of dollars each year. Such repairs are time consuming and costly to correct. Applications could include computer room sub-floor areas, telephone equipment rooms, bathrooms, laundry rooms, any areas adjacent to a water storage tank or piping. Also evaporative air conditioners, drip pans, overflows and/or drains.

Using no mechanical parts, the GRI Water Sensors are triggered by a moisture bridge across the sensor contacts. The GRI Water Sensors can be installed to detect a layer of water as minute as 1/16 of an inch in depth.

The 2600 Closed Loop Sensors use an external power source to energize a built-in relay contact so battery power is not recommended. Used in a closed loop configuration, an alarm condition will occur when moisture is detected, or if power to the sensor is lost, and if the sensor should fail. The relay output can be wired directly to any alarm panel or can be used to actuate an external device, i.e. transmitter, annunciator, etc.

In sump pumps and areas of high humidity, GRI recommends a low sensitivity version: 2600-LS, 2600T-LS.

The 2500 Open Loop Sensors use an external power source which will energize a built-in relay contact when water is detected. With this configuration the sensors are not fail safe. The relay output can be wired directly to any alarm panel or can be used to actuate an external device, i.e. transmitter, annunciator, etc.



2500/2600



2500T/
2600T



2500K/2600K

PART NUMBERS:

Closed Loop

2600/2600T
2600-LS/2600T-LS
2600T-P
2605
2624
2600K
2600T-PHS

Configuration

Normally Closed For a Closed Loop Circuit 12 Volts DC
Normally Closed For a Closed Loop Circuit 12 Volts DC Low Sensitivity
Remote Sensor With 36" Leads (Works with 2600T and 2500T)
Normally Closed For a Closed Loop Circuit 5 Volts DC
Normally Closed For a Closed Loop Circuit 24 Volts DC
Normally Closed For a Closed Loop Circuit 12 Volts DC (W/1 - 2600T-PHS Sensor)
Remote Sensor Case With Terminal Connections for 2600K and 2500K

Open Loop

2500/2500T
2600T-P
2505
2524
2500K
2600T-PHS

Configuration

Normally Open For an Open Loop Circuit 12 Volts DC
Remote Sensor With 36" Leads (Works with 2500T and 2600T)
Normally Open For an Open Loop Circuit 5 Volts DC
Normally Open For an Open Loop Circuit 24 Volts DC
Normally Open For an Open Loop Circuit 12 Volts DC (W/1 - 2600T-PHS Sensor)
Remote Sensor Case With Terminal Connections for 2500K and 2600K





WATER SENSOR WITH RELAY CONTACT

INSTALLATION NOTES:

G.R.I. 2505, 2605, 2500, 2600, 2524 and 2624 Water Sensors: When connecting these sensors to the panel, the red wire is connected to the positive side of the auxiliary power supply and the black wire is connected to the negative. The green and white wires can then be connected to the pre-selected Closed Loop zone. A resistor can be connected in series with either the green or white wire for those panels that require end-of-line resistors.

G.R.I. 2500T, 2600T, 2500T-P, 2600T-P, 2524T, 2624T, 2500K, and 2600K Sensors: Provide a means of detecting water in difficult to monitor locations, such as under carpets and in drop ceiling panels. This is accomplished by mounting 1 or more 2600T-P or 2600T-PHS's in various locations around the area to be monitored, then run the sensor wires to the terminal screws on the 2600T or 2624T. These can then be wired for power as described above for the 2600 Water Sensor. The 2500T and 2600T include two 2600T-P sensors. (A maximum of ten 2600T-P's can be connected to each 2600T.) The 2500K and 2600K include one 2600T-PHS sensor.

After installation these units should be tested with a damp sponge or paper towel and inspected annually. If there is any corrosion or damage the sensor should be replaced.

CLOSED LOOP SPECIFICATIONS:

Power Requirements:

2600 Operating Voltage	12 Volts DC
2605 Operating Voltage	5 Volts DC
2624 Operating Voltage	24 Volts DC
Operating Current	12 mA

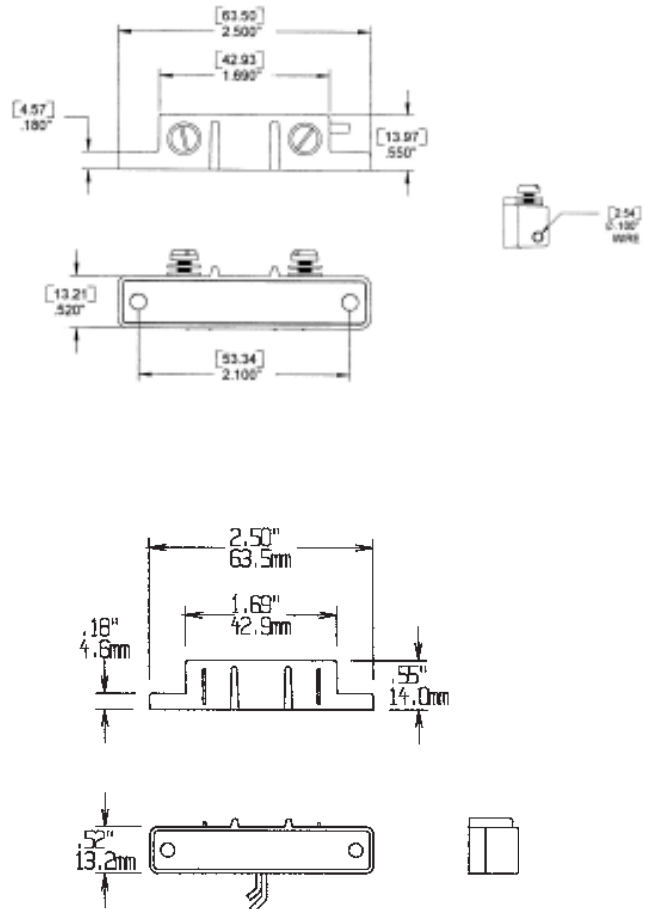
Wire Contacts:

Red Wire	+12 Volts DC
Black Wire	- Ground
Green Wire	Relay Contact
White Wire	Relay Contact

Contact Characteristics:

Contact Resistance	100 mΩ
Switching Voltage	30VDC Max
Switching Current	500 mA Max
Power	250mW Max

*Note: Battery Power Not Recommended



WARRANTY:

One year warranty against workmanship, material and factory defects.

GEORGE RISK INDUSTRIES, INC.
G.R.I. PLAZA
KIMBALL, NE 69145



MADE IN U.S.A.

TOLL-FREE 1-800-445-5218
TOLL-FREE 1-800-523-1227
(308) 235-4645
FAX (308) 235-3561

E-MAIL: grisales@megavision.com
WEB SITE: www.grisk.com