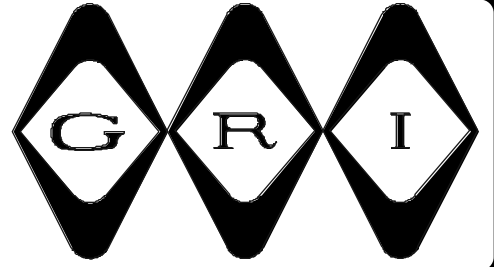


BOX TAMPER SWITCH



TS-01 Box Tamper Series

- ◆ Environmentally Sealed Contacts
- ◆ Eliminates False Alarms and Nuisance Service Calls
- ◆ Magnetically Plunger Actuated
- ◆ No Blades To Corrode
- ◆ No More Switch Bounce
- ◆ Replaces Older Mechanical Tamper
- ◆ No Additional Hardware or Adapters Needed
- ◆ Longer Service Life
- ◆ Fits Most Bell, Siren and Control Panel Mounting Hole Patterns
- ◆ Use Indoors
- ◆ Vibration Free
- ◆ Install and Forget
- ◆ Available In Closed Loop, Open Loop and S.P.D.T.
- ◆ Available With Screw Terminals or Wire Leads
- ◆ Available With Built In Automatic Shunt Feature For System Servicing (gray); TS-01S/TSW-01S, or as a Non-Shunt Version: TS-01/TSW-01



TS-01
Standard Available in Black
With Shunt Available in Gray



TSW-01
Standard Available in Black
With Shunt Available in Gray

The shunt feature is activated by simply pulling on the plunger until it locks. In this position, the circuit is closed while the door is open to help make servicing easier.

When using the TS-01 series with the automatic service shunt it is important to **REMEMBER** to **fully depress (reset) the plunger prior to closing the cabinet/box door** and rearming that circuit. Failure to restore the plunger will cause the TS-01 to become erratic and not secure the zone circuit properly.

WARRANTY:

Lifetime warranty against workmanship, material and factory defects.

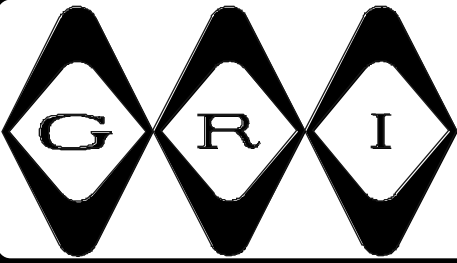
GEORGE RISK INDUSTRIES, INC.
G.R.I. PLAZA
KIMBALL, NE 69145



MADE IN U.S.A.

TOLL-FREE 1-800-445-5218
TOLL-FREE 1-800-523-1227
(308) 235-4645

FAX (308) 235-3561
E-MAIL: grisales@megavision.com
WEB SITE: www.grisk.com



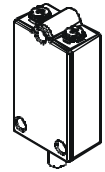
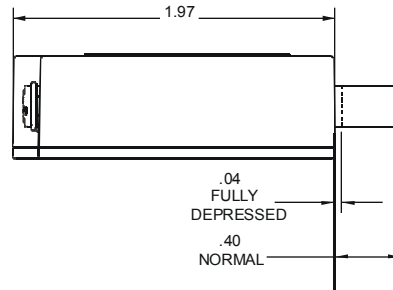
BOX TAMPER SWITCH

Installation Applications:

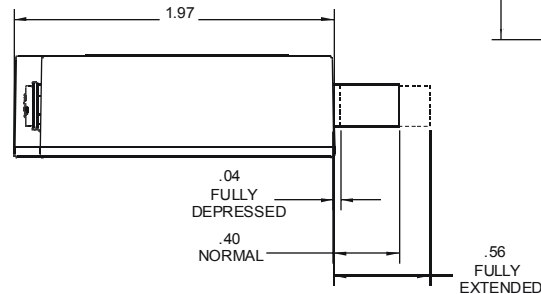
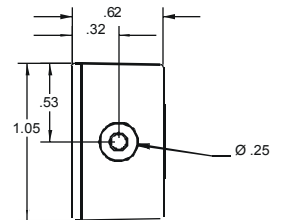
The TS-01 and TSW-01 magnetic reed, three hole box tamper switch is designed to fit almost all standard siren and panel boxes. Available with an adjustable plunger length, the TS-01 allows the installer to alarm the box to detect opening or prying to remove the box from its mounted position. Screw terminals or wire leads provide easy hook up.

Available in closed loop, open loop and S.P.D.T. Mounting hardware included.

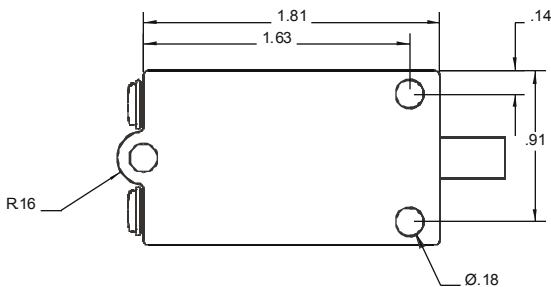
TSW-03 is available with leads only.



All models without shunt
(Leads not shown)



All models with shunt
(Leads not shown)



Back - All models
(Leads not shown)

GRI products meet or exceed these minimum general specifications:

PART NUMBER	LOOP TYPE	ELECTRICAL CONFIG.	REED FORM	MAXIMUM INITIAL CONTACT RESISTANCE (Ω)	MAXIMUM CONTACT RATING (W)	MAXIMUM SWITCHING VOLTAGE (VDC/VAC)	MAXIMUM SWITCHING CURRENT (A)
TS-01(S)	Closed	N/O	A	.150	10	160/110	.400
TSW-01(S)	Closed	N/O	A	.150	10	160/110	.400
TS-02(S)	Open	N/C	B	.140	5	175VDC	.250
TSW-02(S)	Open	N/C	B	.140	5	175VDC	.250
TSW-03(S)	Open/Closed	S.P.D.T.	C	.140	5	175VDC	.250

Approx. Total Travel: .415

Pre-Travel: Min .175 Max .240

CONTACT YOUR G.R.I. DISTRIBUTOR OR CALL:

GEORGE RISK INDUSTRIES, INC.
GRI PLAZA
KIMBALL, NE 69145



MADE IN U.S.A.

TOLL-FREE 1-800-445-5218

TOLL-FREE 1-800-523-1227

(308) 235-4645

FAX (308) 235-3561

E-MAIL: grisales@megavision.com

WEB SITE: www.grisk.com