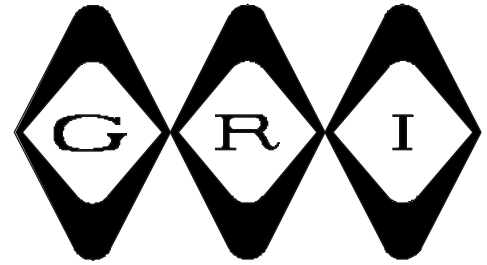


# ROLLER BALL - PLUNGER CONTACT



## RB SERIES

- ◆ Works From All 360 Degree Directions
  - ◆ Screw Down Flange
  - ◆ 12" #22AWG Leads or Screw Terminals
- ◆ Longer Leads, Zip Cord or Jacketed Cable Upon Request
- ◆ Hermetically Sealed    ◆ Plated Contacts Resist Sticking or Freezing
  - ◆ Spacers and Mounting Hardware Included
- ◆ Built-in E.O.L. Resistors and Diodes Upon Request
  - ◆ Supervisory Loops Available Upon Request
  - ◆ Switches and Spacers Available Separately
- ◆ Colors: White, Brown    ◆ Lifetime Warranty



**RB-01**



**RB-01T**

**PART NUMBERS:**

**Closed Loop**

RB-01  
RB-01T

**Open Loop**

RB-02  
RB-02T

**SPDT**

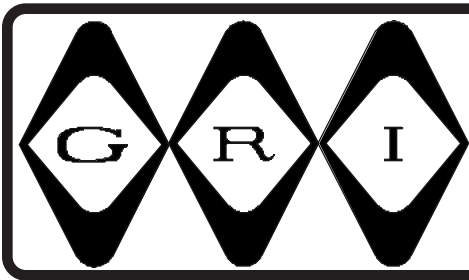
RB-03

Travel:	Total	.200
	Pre Travel	.080 ± .030

GEORGE RISK INDUSTRIES, INC.  
G.R.I. PLAZA  
KIMBALL, NE 69145



TOLL-FREE 1-800-445-5218  
TOLL-FREE 1-800-523-1227  
(308) 235-4645  
FAX (308) 235-3561  
E-MAIL: [grisales@megavision.com](mailto:grisales@megavision.com)  
WEB SITE: [www.grisk.com](http://www.grisk.com)

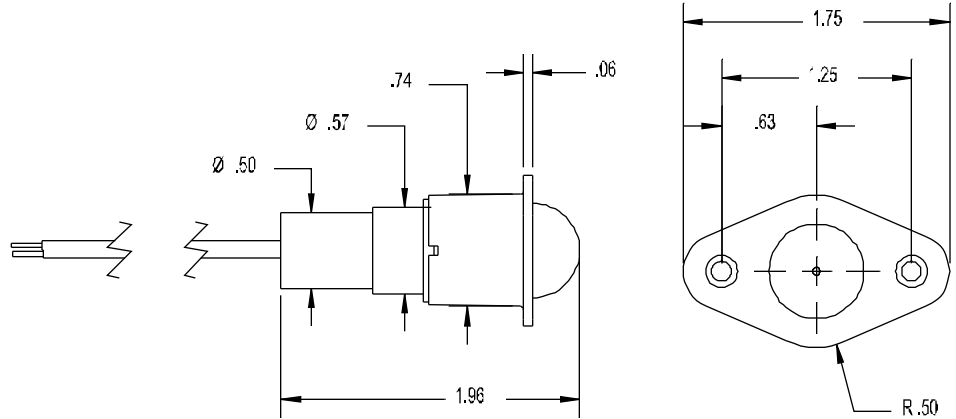


# ROLLER BALL - PLUNGER CONTACT

## INSTALLATION APPLICATIONS:

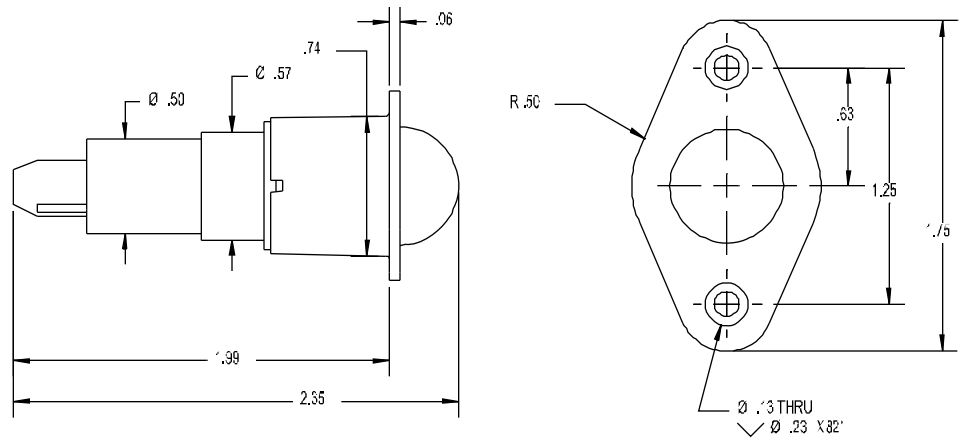
G.R.I.'s Roller Ball switch is a unique application of the magnetic reed, combining into a single package mechanical plunger action and the reliability of a hermetically sealed switch.

The ball plunger can be activated from any direction within 360 degrees, using a sliding motion such as that produced by the opening or closing of a door or window into its frame. But they also have been used very effectively as an interior trap device by mounting on a flat surface, such as a display table, and placing the protected object directly on the switch to conceal and actuate the roller ball. G.R.I. Roller Ball switches can work when nothing else will. Spacers and mounting hardware included with switch and also available separately. The terminal version is indicated by the addition of "T" after the part number. Not Recommended for the bottom track of doors or windows.



\* Fits 3/4" Hole

RB-01



RB-01T

## GRI products meet or exceed these minimum general specifications:

PART NUMBER	LOOP TYPE	ELECTRICAL CONFIG.	REED FORM	MAXIMUM INITIAL CONTACT RESISTANCE (Ω)	MAXIMUM CONTACT RATING (W)	MAXIMUM SWITCHING VOLTAGE (VDC/VAC)	MAXIMUM SWITCHING CURRENT (A)
RB-01	Closed	N/O	A	.150	10	200/140	.500
RB-01T	Closed	N/O	A	.150	10	200/140	.500
RB-02	Open	N/C	A	.150	10	200/140	.400VDC/.280VAC
RB-02T	Open	N/C	B	.140	5	175VDC	.250
RB-03	Open/Closed	SPDT	C	.140	5	175VDC	.250

## WARRANTY:

Lifetime warranty against workmanship, material and factory defects.

## CONTACT YOUR G.R.I. DISTRIBUTOR OR CALL:

GEORGERISK INDUSTRIES, INC.  
GRI PLAZA  
KIMBALL, NE 69145



MADE IN U.S.A.

TOLL-FREE 1-800-445-5218  
TOLL-FREE 1-800-523-1227  
(308) 235-4645

FAX (308) 235-3561

E-MAIL: [grisales@megavision.com](mailto:grisales@megavision.com)

WEB SITE: [www.grisk.com](http://www.grisk.com)